

What is BioQuest Academy?

BioQuest Academy is more than a field trip. In the Academy, you conduct hands-on research in a real lab for two weeks. SBRI scientists will guide you while you perform cutting edge laboratory experiments to help fight the world's deadliest killers: HIV, malaria and tuberculosis.



Week one:

YOU perform experiments that introduce you to lab techniques such as PCR, gel electrophoresis and microarray analysis.

Week two:

Apply that knowledge as your scientist mentors advise you on a week-long team research project.

"...Insight into the lives of the scientists benefited me the most. I got to see how excited each scientist was to come to work and go do what they do."

BQA Graduate

"I learned what professionals are trying to do about it [global health]. All the science I've had – I didn't know what they actually did. How you actually carry out an experiment that would help you find out more about diseases."

BQA Graduate



More than a field trip.

- You've been on field trips.
- You've listened to lectures.
- You've done a job shadow.

But you've never been to **BioQuest Academy**.

Would you like to receive a stipend for your time and travel, while working alongside real scientists? How about exploring the possibilities of science as a career? Do you want to cure malaria? (OK, we'll take it one step at a time. Visit our website at www.sbrbioquest.org.)

"I learned so much about not only infectious disease, but also about laboratory procedures and tools that will greatly impact my high school work and beyond."

BQA graduate



What can BioQuest Academy do for me?

BioQuest Academy is not a class. It's not about earning a grade. It's an opportunity to take a look into the world of science, explore career opportunities and learn how you can improve global health.



STEP INTO SCIENCE

She's your age – and already lived half her life.

Because of malaria, HIV and TB, this is what middle-aged looks like in many parts of the world.

Learn how you can help her live as long as you.

Step into science with BQA.

"Being involved in a real life scenario of science and research made me realize that this is where I belong."

BQA Graduate



GO

What will I get out of BioQuest Academy?

Our commitment to you will not end when you leave our lab.

At the BioQuest Academy, you can build relationships with scientists actively working in cutting edge biology. Your Academy mentors will work with you throughout your senior year as you apply for college, look for internships and prepare to move on from high school. Previous BioQuest Academy graduates have said the Academy played a huge role in preparing them for college and beyond.

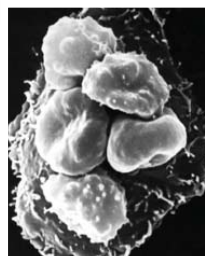
When is the BioQuest Academy?

Spend two weeks in the summer with us, Monday to Friday, working side by side with real scientists in our lab.

Deadlines: How do I apply for the Academy?

- Applications are due on the last day of March.
- For application information come to our website at www.sbribioquest.org.
- or talk to your teacher for more information.

For more information, contact BioQuest by email at bqa-info@sbri.org.



How does this make an impact on the worldwide health?

At Seattle Biomedical Research Institute (SBRI), we envision a world where people live free from the threat of infectious disease. Through SBRI's BioQuest science education program, we provide Washington State high school students the skills and opportunities you need to start down the path to careers that help people suffering most from deadly infectious diseases. Our infectious disease research is the foundation for new drugs, vaccines and diagnostics that benefit those who need our help most: the 14 million who will otherwise die each year from infectious diseases.

This project is supported by Grant number R from the National Center for Research Resources (NCRR) a component of the National Institutes of Health (NIH). Its contents are solely the responsibility of the authors and do not necessarily represent the official views of NCRR or NIH.

SEPA SCIENCE EDUCATION
PARTNERSHIP AWARD
Supported by the National Center for Research Resources, a part of the National Institutes of Health

 **BioQuest Academy**